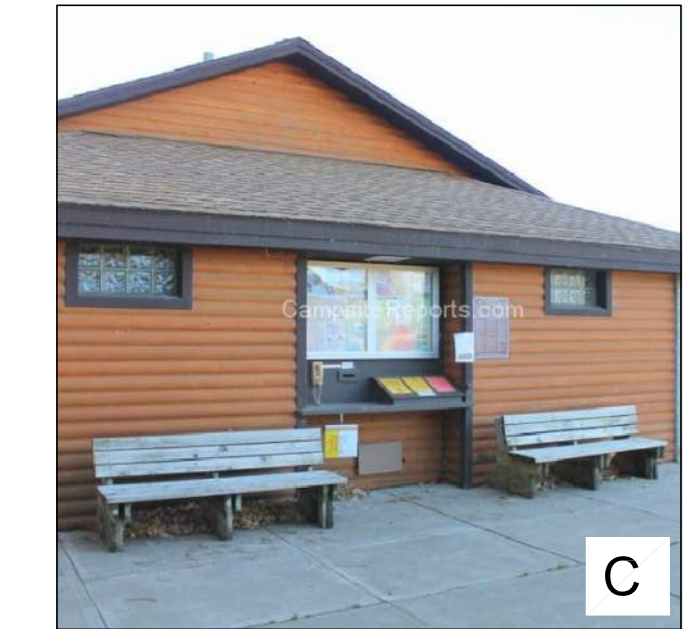
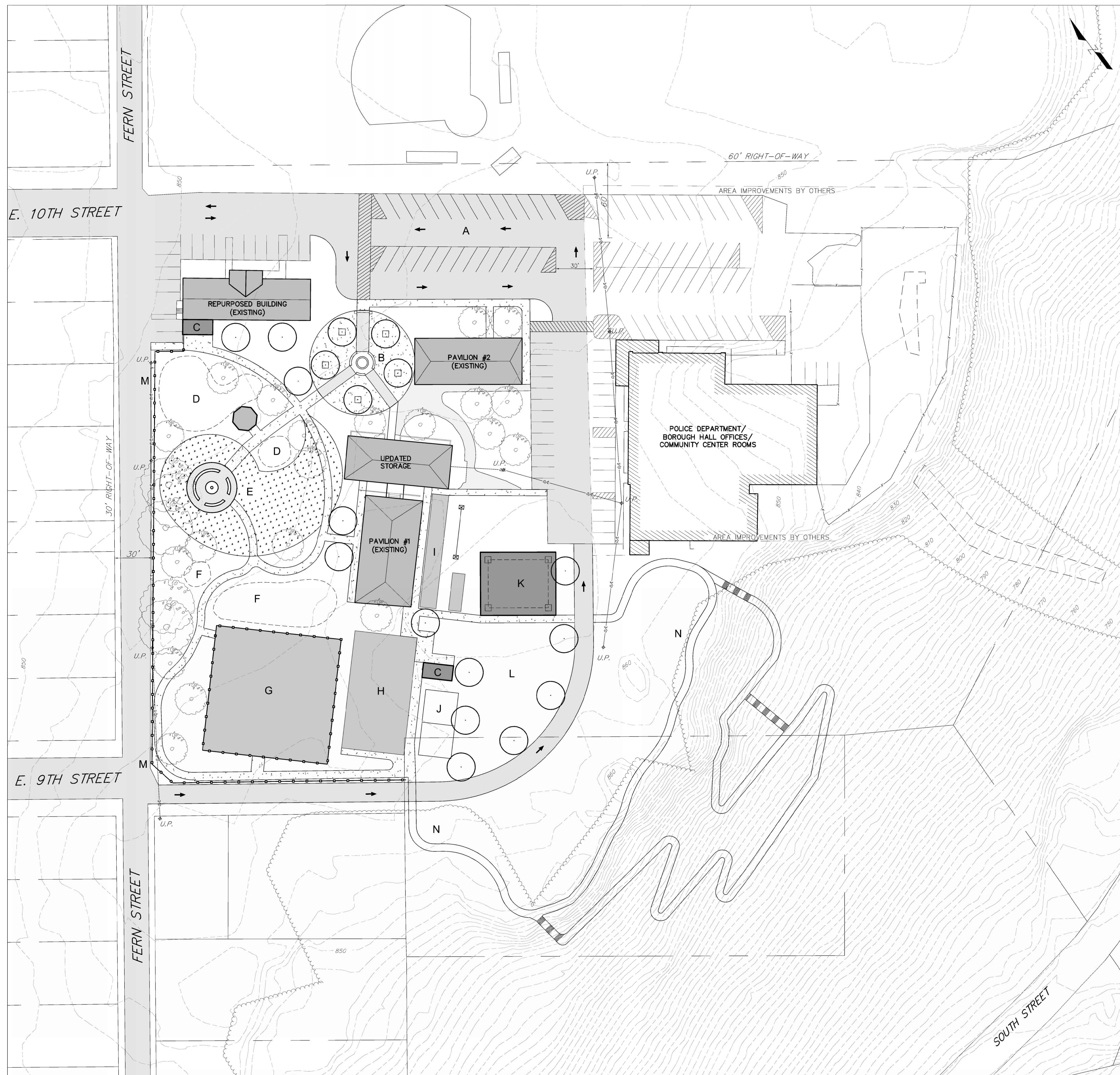


MEMORIAL PARK MASTER PLAN

Jim Thorpe
Carbon County, Pennsylvania

MAP # 1

CONCEPT A



LEGEND

- A. LINED PARKING WITH PARK DROP OFF
- B. RADIAL WAR MEMORIAL CONTEMPLATIVE LAWN/COURTYARD WITH FOUNTAIN
- C. RESTROOM BUILDING WITH INFORMATIONAL KIOSK
- D. PLAYGROUND (AGES 2-5) WITH RELOCATED GAZEBO
- E. MULTI-SENSORY MEADOW GARDEN
- F. PLAYGROUND (AGES 5-12)
- G. SKATE PARK (10,000 SF)
- H. BASKETBALL COURT (1)
- I. LAWN GAMES
- J. VOLLEYBALL COURT
- K. BAND SHELL
- L. OPEN GREEN SPACE
- M. NEW FENCING
- N. WALKING TRAIL